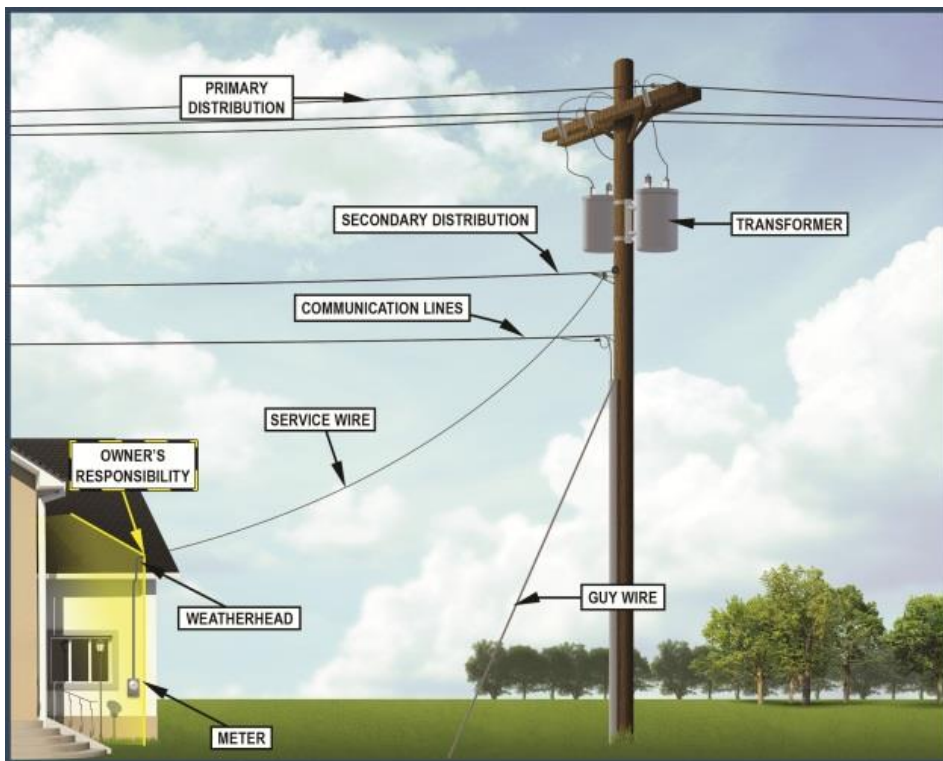


DLPU TREE TRIMMING POLICY



Tree Branches

It is the property owner's responsibility to trim back any trees or vegetation on your property that are too close to – or in contact with – service wires, communication lines or secondary power lines. The service drop line connects from the utility pole to your home. Communication lines (which provide phone or cable service) are typically the lowest line on a utility pole.



If your trees need trimming, we recommend you hire a qualified tree trimmer to safely remove foliage that is too close to powerlines. Most qualified companies will make arrangements with the Detroit Lakes Public Utilities to do an electrical safety prune, or to deenergize and temporarily move the power line.

Dead or Uprooted Trees in your yard

We do not remove dead or uprooted trees but will assist in making the tree safe for the owner to finish the removal with a safety prune or by deenergizing and temporarily relocating the power line.

Branches / Trees along a roadway or street

High voltage distribution lines and transmission lines that run along a roadway or street are on a set schedule for tree trimming by the Detroit Lakes Public Utilities. However, please report any branches or trees that need immediate attention.

Storm Damaged Trees or Branches

When severe weather causes trees or other vegetation to fall across power lines and create power outages the DLPU will trim or remove fallen trees that may be interfering with power restoration. After the power has been restored and it is deemed safe, disposal of any wood, limbs or debris resulting from this type of emergency is the property owner's responsibility.

For more information please call Detroit Lakes Public Utilities at 218.847.7609.